

/ WORDS PRAISE POH

GREEN FLUIDITY

The newly-revealed Golf Clubhouse at Tanah Merah Country Club breathes modernity into its surroundings.

/ 1
The low-slung, fluid roof provides a modern touch to the clubhouse, while blending harmoniously with the existing buildings.



URBNarc, a boutique design practice headquartered in Singapore, has redesigned the two-storey clubhouse at Tanah Merah Country Club. It sits harmoniously with its immediate and surrounding landscape, exuding an air of timeless elegance.

An Additions and Alterations (A&A) project, it was formed with the key objective to integrate the new build with the existing buildings and golf course.

“The clubhouse is designed to engage within its setting with a harmonious choice of building materials, subdued colour selection and a design where transition spaces between built form and the exterior environment is seamless,” says Gaurang Khemka, founder of URBNarc.

As Khemka and his team did not have the luxury of designing the building from scratch, they had to work around the

legacy architecture and infrastructure, which proved to be rather challenging as many unforeseen circumstances sprang up on them during construction.

As a result, they had to recalibrate the design and reorganise the construction sequence with the contractor on the fly.

“We found a telecom manhole during the excavation in a key public area, that was not on any as-built drawings. We had to seek permission from Singtel and the Ministry of Transport [to ask] if we could relocate or abandon it. It took six weeks to get approval to abandon it as we were laying new telephone lines anyway.

“This impacted the project construction sequence, but we were able to advise the contractor to work around the situation by focusing on other areas and creating a phasing diagram for them.”

In addition, while the changing rooms in a nearby existing building were completely

re-designed internally, the client was inflexible about losing the pitched roofs over them.

As a result, the team was tasked with an interesting challenge to assimilate the existing pitched roofs over the changing rooms with the contemporary flat roof design of the rest of the clubhouse.

To achieve that, they devised a solution to create a flat roof corridor and garden around the changing rooms. This successfully took away the impact of the pitched roofs and blend them into the overall new, sleek built form.

paying homage to the old-growth Rain Trees on site.

He says, "This generated the idea of a low-slung, fluid roof that helped tie all the existing and new club functions, blend the existing changing rooms and their pitched roofs and, in turn, created a beautiful set of naturally ventilated spaces – namely the Golfer's Veranda, Lounge and circulation spaces with panoramic views of the golf course.

"Timeless and contemporary [design] is more about proportions and space creation, matched with the right



Khemka believes if you get the design fundamentals right at the outset, then form would follow function, and likewise, function would follow form seamlessly. Therefore, with every project, he aims to touch the ground lightly and blend the buildings into the context.

For example, the four key factors that drove the design for the Clubhouse were blending it into the layout of the existing golf course, optimising natural wind flows, minimising solar insolation, and

materials, colours and simple executable details. I personally believe that a building that is easy to maintain, has no frills and fancies, responds to its function and ages gracefully, will always stay contemporary."

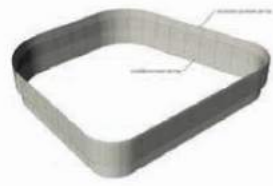
Taking into consideration the sun's orientation and prevailing winds, the well-ventilated Veranda is specially sited at the south end of the golf course to offer best views and avoid glare for guests viewing the golf course, while optimising the

The south face of the clubhouse on the approach side features a Porte-Cochere arrival point and entrance.

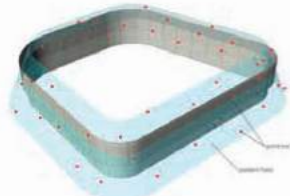


To mimic the feeling of sitting under a canopy of trees, perforated metal screens inspired by the leaf patterns of Rain Trees were specially customised and used in the entrance lobby rotunda.

FOLIAGE SCREEN PATTERN DEVELOPMENT



1/ INSIDE AND OUTSIDE PANEL ARRAYS



2/ DRAW PATTERN FIELD & POINT SET



3/ DRAW 3D VORONOI BASED ON POINT SET



4/ INTERSECT 3D VORONOI WITH PANELS



5/ "TREE" OUTLINE DIAGRAMS

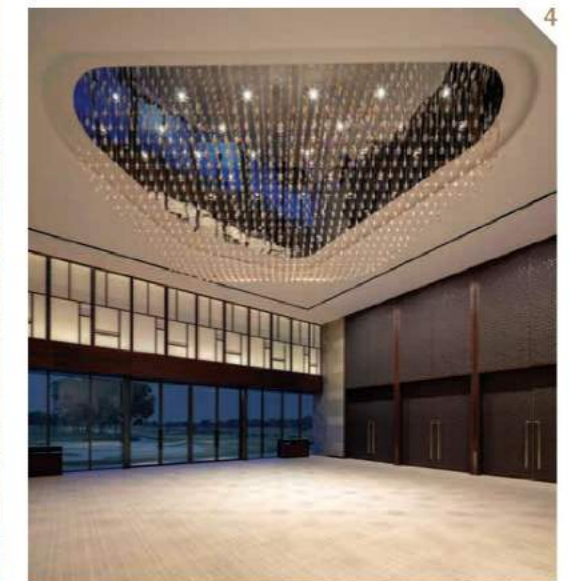


6/ FINAL PATTERNS WITH DIAGRAM OVERLAY



3

3 Sited at the south end of the golf course, the Veranda is oriented to capture prevailing winds and minimise the glare for those looking out to the golf course.



4

4 The pre-function and function rooms are positioned along the north facade of the clubhouse in the interest of providing panoramic views across the golf course.

climatic conditions at the same time.

To maximise views to the golf course, the structural columns supporting the low-slung green roof over the Veranda are customised with integrated lighting and take on a slenderer form, compared to the usual thicker and opaque supporting beams.

The Veranda also acts as a transition gateway between the golf course and the clubhouse, as well as a crossroad for all sporting and social activities. All club functions and member facilities are

set within or adjacent to the Veranda, promoting easy access and allowing guests and members to flow seamlessly from one space to another.

To mimic the feeling of sitting under a canopy of trees, perforated metal screens inspired by the leaf patterns of Rain Trees were specially customised and used in the entrance lobby rotunda, main restaurant, and the function and pre-function rooms.

These serve as both a decorative and shading element, creating filigreed layers of light and shade during the day, and



Gaurang Khemka, Founder of URBNarc

adorning the building with an ethereal jewel-like quality at dusk.

As part of the grand plan to blend the clubhouse building into the golf course, Khemka also designed elevated skylights over the buggy staging areas in the shape of golf course bunkers.

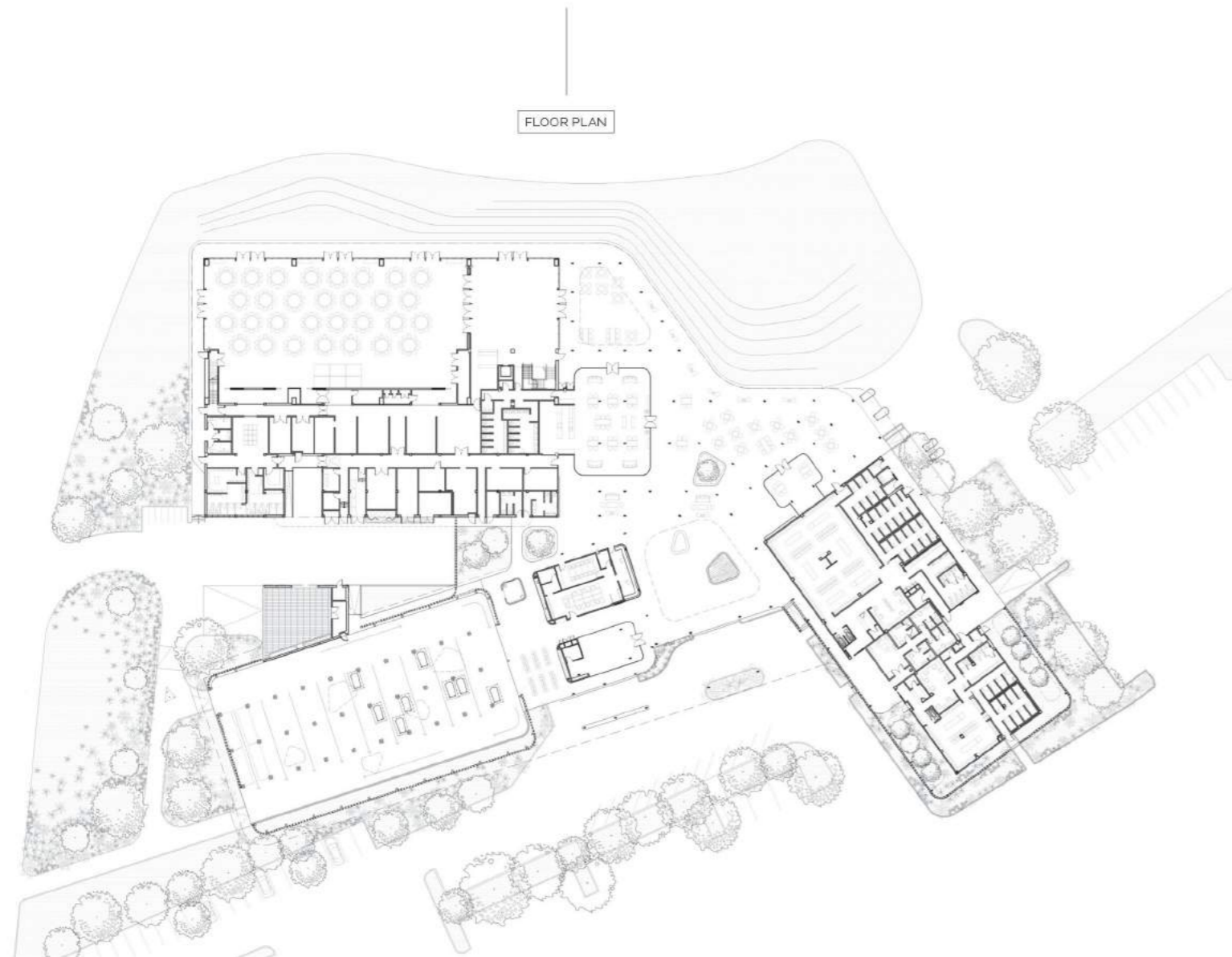
Besides providing an aesthetic relief to the space below, they also serve to usher in natural light, as well as facilitate the escape of hot air, passively cooling the buggy staging area.

"In short, the entire Clubhouse is

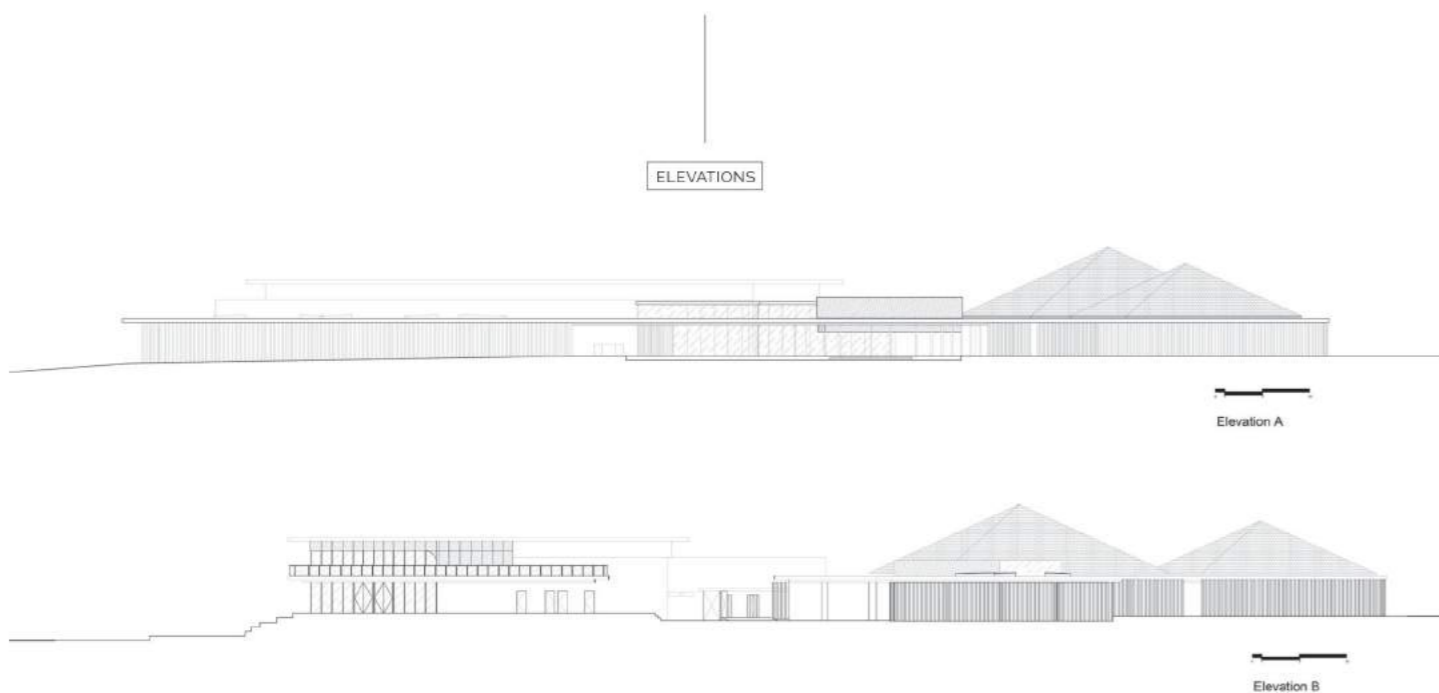
inspired by nature. The cut-outs are meant to represent golf bunkers, the timber cladding is meant to evoke the body of the trees, and the bespoke screens are meant to be the foliage," Khemka concludes.

The building is also certified with Singapore Green Mark rating. All the light fixtures use LED lights and come with motion sensors. The light intensity is also intentionally kept to a minimal to reduce disturbance to nocturnal fauna.

Open spaces are connected to allow micro fauna to co-exist with the building,



FLOOR PLAN



ELEVATIONS

Elevation A

Elevation B



5

**TAMPINES COURSE CLUBHOUSE,
TANAH MERAH COUNTRY CLUB**

LOCATION	/ SINGAPORE
COMPLETION	/ 2018
SITE AREA	/ 85HA
BUILDING AREA	/ 7916M ²
GROSS FLOOR AREA	/ 5872M ²
LEAD DESIGNER/ CONSULTANT	/ URBNARC
PROJECT ARCHITECT	/ FOCUS ARCHITECTS
INTERIOR DESIGN	/ INDEZ DESIGN CONSULTANTS
CONTRACTOR	/ SH DESIGN & BUILD
C&S CONSULTANTS	/ SC CONSULTANTS
QUANTITY SURVEYOR	/ INFIELD PROJECTS
M&E CONSULTANTS	/ HPX CONSULTING ENGINEERS
LIGHTING CONSULTANT	/ SWITCH LIGHTING
KITCHEN CONSULTANT	/ Q'SON
AV CONSULTANT	/ TRITONE AV
ESD CONSULTANT	/ BUILDING SYSTEM & DIAGNOSTICS
EXTERIOR FINISHING	/ SH DESIGN & BUILD
INTERIOR FINISHING	/ LINCOTRADE & ASSOCIATES

/ 5
The structural columns in the Golfer's Lounge were customised to a slenderer form to maximise views to the golf course.

/ 6
In order to fulfill the Green Mark standards, the Rain Tree-inspired screen installed in the function room on the north façade of the clubhouse had to be against a dark, tinted e-glass.



6

and bicycle parking and showers are also provided to encourage active mobility.

The Rain Tree-inspired screen installed in the function room on the north façade of the Clubhouse was originally meant to be against a clear glass to act as a gentle shading device and create interesting shadow plays and ornamentation for the function room. However, in order to meet the Green Mark standards, the team had to replace it with a dark, tinted e-glass.

This was a minor setback for Khemka

and is one area that he would like to re-visit again, either through establishing a dialogue with the authorities to change it back to clear glass, or re-designing the screen.

Nevertheless, through using creative design solutions, keeping details simple and easily executable, and adopting a minimal palette of materials, Khemka and his team have managed to build the Clubhouse for under \$300 per square foot, making it a highly cost-effective project.